

Improving survival after an emergency resuscitative thoracotomy: a 5-year review of the Trauma Quality Improvement Program

Bellal Joseph,¹ Muhammad Khan,¹ Faisal Jehan,¹ Rifat Latifi,² Peter Rhee³

¹Division of Trauma, Critical Care, Emergency Surgery, and Burns, Department of Surgery, University of Arizona, Tucson, Arizona, USA

²Department of General Surgery, Westchester Medical Center, Valhalla, New York, USA

³Division of Trauma and Acute Care Surgery, Grady Memorial Hospital, Atlanta, Georgia, USA

Correspondence to

Dr Bellal Joseph, Division of Trauma, Critical Care, and Emergency Surgery, Department of Surgery, University of Arizona, Tucson, AZ 85721, USA; bjoseph@surgery.arizona.edu

Received 23 June 2018

Revised 13 August 2018

Accepted 21 August 2018

ABSTRACT

Background Advancement in trauma care has led to the evolution of emergency resuscitative thoracotomy (ERT) for the revival of trauma patients. We now have more precise understanding of selecting suitable patients for achieving optimal outcomes. The aim of our study was to analyze the utilization and survival trends during the past 5 years, as well as factors that influence survival after ERT.

Methods A 5-year (2010–2014) analysis of all trauma patients ≥ 18 years who underwent ERT in the American College of Surgeons Trauma Quality Improvement Program. Outcome measures were utilization rates and survival trends after ERT during the 5-year period. Regression analysis was performed.

Results 2229 patients underwent ERT, mean age was 37 ± 17 years, 81% were male. Overall 56% patients had penetrating mechanism, location of major injury was thorax in 48, and 71% had signs of life (SOL) on arrival. The overall survival rate was 9.6%. From 2010–2014 ERT utilization has decreased from 331/100 000 to 243/100 000 trauma admissions ($p=0.002$) and the survival rate has improved from 7.9% to 11.3% ($p<0.001$). On regression, the independent predictors of survival were penetrating mechanism, age < 60 years, SOL on arrival, no prehospital CPR and ISS. No patient aged > 60 years with a blunt mechanism of injury (MOI) survived, and there were no survivors above the age of 70 years, regardless of injury mechanism.

Discussion Utilization of ERT has been decreased during the study period along with improved survival rates. The results of our study demonstrate that performing ERT on patients aged > 60 years with a blunt MOI or on any patient aged ≥ 70 years, regardless of MOI, is futile and should be avoided.

Level of evidence Level III, prognostic studies.

INTRODUCTION

Trauma remains one of the leading causes of morbidity and mortality in USA.^{1,2} Both blunt and penetrating traumas can result in significant injuries that produce hemodynamic collapse refractory to initial, traditional resuscitative measures. During the past decades, emergency resuscitative thoracotomy (ERT) has been used in such circumstances as an urgent procedure to assist achieving homeostasis along with ongoing specific resuscitative maneuvers. In addition, this invasive procedure has been evolving since its conception, from simple aortic artery occlusion to include pericardial decompression as well as open cardiac

massage and repair.^{3,4} Beall *et al*⁵ were the first to formally describe the procedure nearly 50 years ago, however, its role has not been well defined in trauma patients until recently. According to the Eastern Association for Surgery of Trauma, the strongest indication for ERT is to be used in patients who present pulseless to an emergency department (ED) with signs of life (SOL) after a penetrating thoracic injury. Other conditional indications include patients who present pulseless to an ED with SOL after a penetrating extrathoracic or blunt injury, as well as patients who present without SOL after a penetrating thoracic or extrathoracic injury or blunt injury.⁶ According to the Western Trauma Association (WTA), ERT is considered futile if prehospital cardiopulmonary resuscitation (CPR) exceeds 10 minutes after a blunt injury without a response, or if prehospital CPR exceeds 15 minutes after a penetrating trauma without a response. In addition, futility is likely when asystole is associated with no pericardial tamponade.⁷

ERT is a potentially life-saving procedure with long-term survival ranging from 10% to 30%, depending on the mechanism of injury (MOI), that is, penetrating or blunt.^{8,9} Multiple independent predictors have been described for ERT, including the MOI,^{3,10–12} anatomic location of major injury (LOMI),^{3,13–15} prehospital CPR,^{14–16} SOL on arrival to the ED,^{3,11,13} and the presence of vital signs.^{15,17,18} Initial utilization of the focused assessment with sonography for trauma (FAST) may potentially avoid this futile intervention as the absence of cardiac motion or pericardial effusion on a FAST examination results in a zero survival rate.¹⁹ Although it may be able to identify patients with a survival potential, it does not necessarily predict survival in those ultimately undergoing ERT. Nonetheless, clinicians perform this procedure in an effort to expertly weigh the last chance of survival against the risk of rescuing patients with anoxic brain injury.⁷

Trauma surgeons continue to be challenged by how best to clinically analyze exactly which subset of trauma patients with recoverable injuries may benefit from ERT. Therefore, the aim of our study was to analyze utilization and survival trends during 5 years as well as factors that influence survival after ERT. We hypothesized that there has been significant change in the utilization and survival trends during the 5-year period.

© Author(s) (or their employer(s)) 2018. Re-use permitted under CC BY-NC. No commercial re-use. See rights and permissions. Published by BMJ.

To cite: Joseph B, Khan M, Jehan F, *et al.* *Trauma Surg Acute Care Open* 2018;**3**:e000201.



METHODS

Study design and population

We conducted a 5-year (2010–2014) retrospective analysis of the American College of Surgeons (ACS) Trauma Quality Improvement Program (TQIP). We identified all adult patients who sustained trauma (age ≥ 18 years) and underwent ERT, as defined by the International Classification of Disease-9th revision Clinical Modification procedure code 34.02. TQIP provides an opportunity for peer trauma centers to compare their processes of care-adjusted and risk-adjusted outcomes. As of 2014, it includes 721 hospitals (ie, 237 level-I, 259 level-II, 189 level-III/level-IV trauma centers, and 36 level-I/level-II pediatric-only centers). Trained abstractors record more than 100 variables concerning both the patient and the institution, including patient demographics; comorbid conditions; type and MOI; injury severity; prehospital and ED physiologic variables; in-hospital procedures and complications; and, outcome information that includes in-hospital mortality and discharge disposition. Intensive training mechanisms for the abstractors as well as inter-rater reliability audits of the participating sites ensures the reliability of the data. Institutional review board approval was not required for this study because the TQIP database contains only deidentified data. Although the ACS administers the program, the authors of this study are solely responsible for the analyses and conclusions presented here.

Inclusion and exclusion criteria

We included all trauma patients aged ≥ 18 years who underwent ERT within 1 hour of arrival to ED. We excluded all trauma patients who sustained gunshot wound (GSW) to the head.

Data points

We retrieved the following data points from the TQIP: demographics (age, gender, race, and ethnicity); vitals on presentation (heart rate, systolic blood pressure (SBP), and temperature); Injury Severity Score (ISS); Abbreviated Injury Scale (AIS); hospital length of stay; MOI—blunt and penetrating, including GSWs and stab wounds (SWs); physiologic data from the scene of injury via emergency medical service (EMS) and on arrival to the ED; Glasgow Coma Scale; SOL; prehospital CPR and survival rate. 'Signs of life' were defined as organised electrocardiogram (EKG) activity, multiple pupillary responses, spontaneous respiratory attempts or movement, or unassisted blood pressure. Prehospital CPR was defined as a sudden, abrupt loss of cardiac function which occurs outside of the hospital, prior to admission at the center in which the registry is maintained, that results in loss of consciousness requiring the initiation of any component of basic and/or advanced cardiac life support by a healthcare provider.

Outcomes measures

The primary outcome was in-hospital survival. Secondary outcomes included survival to operating room, survival to intensive care unit, survival based on age, MOI and penetrating MOI (GSW and SW).

Data analysis

Missing data were treated as missing at random. Multiple imputations were performed using a missing value analysis technique to account for the missing values. This technique is used to reduce bias and increase the number of patients available. To impute the data sets, the original data set was analyzed for random missing data points using Little's missing completely at random test. We

used the Markov chain Monte Carlo method for multiple imputations, that is, a collection of methods for simulating random draws from non-standard distributions. The following categories had missing data on heart rate, SBP, and temperature. Overall $<2\%$ data were missing. However, we performed rigorous statistical analysis to analyze the missing variables and control for any bias caused by these variables.

Data are reported as mean (with SD) for continuous parametric data, as median (with IQR) for non-parametric data, and as proportion for categorical data. We used the Mann-Whitney U test and Student's t-test to explore differences in the two groups concerning non-parametric and parametric continuous variables, respectively. We used the χ^2 test to identify differences in categorical variables between the two groups. Subanalysis was performed based on age as well as penetrating MOI. To assess the association between each variable and the binary outcomes, we performed a univariate analysis. Variables with a significant ($p < 0.2$) association on the univariate analysis were then used in a multivariate logistic regression model. On the multivariate logistic regression analysis, variables were considered significant at $p < 0.05$. The model fit was assessed by the Hosmer-Lemeshow test. In the logistic regression model, the Hosmer-Lemeshow test exceeded 0.05 and the tolerance was greater than 0.1 for all independent variables with a variance inflation factor of less than 10.0. To explore trends in outcomes for categorical variables, we used the Cochran-Armitage trend test with years as a covariate. For trends of outcomes of continuous data, we used a linear regression analysis with years as a covariate. For our study, a $p < 0.05$ was considered statistically significant. All statistical analyses were performed using SPSS (V.24, SPSS, Chicago, Illinois, USA).

RESULTS

A total of 2229 patients underwent ERT between 2010 and 2014. **Table 1** demonstrates the demographics and physiologic parameters of the study population. Mean age was 37 ± 17 years, 81% were men, 42.3% were white, and 13.5% were Hispanics. On the scene, the SBP was 61.8 ± 59 mm Hg, and 37.5% had a pulse less than 60 beats per minute (bpm). On arrival to ED, SBP was 73.4 ± 58.2 mm Hg, and 30.3% of patients had a pulse less than 60 bpm. Of the patients, 71% presented to ED with SOL, 36% of the patients presented to ED with CPR in progress, 24.5% of the patients died in ED, and 68.4% were disposed to operating room from ED. The overall survival rate was 9.6%. The MOI was penetrating in 56.3% of patients, including 43.7% GSWs and 9.1% SWs. LOMI was an isolated thorax in 48.1% of patients, and 41.1% had multiple injuries. The median ISS was 27 (9-75), and thoracic-AIS was 3 (3-6). Overall, 66.4% of patients had an ISS ≥ 16 . In our study, the overall survival rate was 9.6% (13.3% penetrating and 4.4% blunt, $p < 0.001$).

In general, the overall rate of ERT has decreased from 331/100 000 trauma admissions in 2010 to 243/100 000 in 2014 ($p = 0.002$). Likewise, the survival rate has improved from 7.9% in 2010 to 11.3% in 2014 ($p < 0.001$). Clearly, the 5-year trend shows that survival has increased over the years. **Figure 1** demonstrates the trend of ERT utilization and survival during the 5-year period.

Patients who survived were more likely to be younger ($p = 0.002$). They had a higher SBP at the scene of injury ($p = 0.015$) and in the ED ($p = 0.01$). They were more likely to sustain multiple injuries ($p = 0.003$) and, interestingly, had a higher ISS ($p < 0.001$) compared with those who died. In addition, they were more likely to present with SOL to the ED

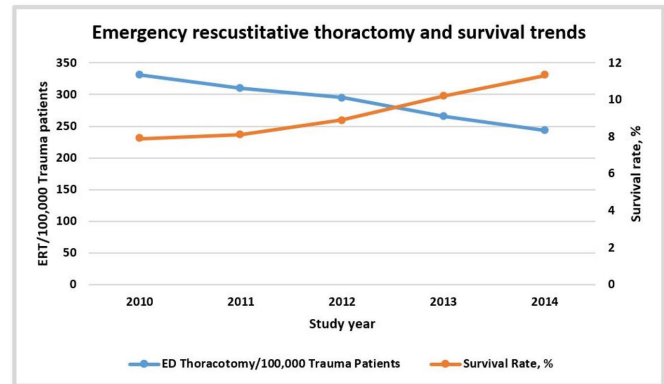
Table 1 Demographics and physiologic parameters of the study population

Characteristics	ED thoracotomy (n=2229)
Age, years (mean±SD)	37.1±16.8
Men	81.2 (n=1811)
Race, % (n)	
White	42.3 (943)
African-American	36.3 (810)
Others	21.4 (476)
Hispanics	13.5 (300)
Vital parameters	
EMS	
SBP, mm Hg (mean±SD)	61.8±59
Heart rate, bpm (mean±SD)	73.6±57
SI, median (IQR)	1 (0.68–1.33)
Pulse <60 bpm, % (n)	37.5 (836)
ED	
SBP, mm Hg (mean±SD)	73.4±58.2
Heart rate, bpm (mean±SD)	84.1±54.3
SI, median (IQR)	1 (0.68–1.37)
Pulse <60 bpm, % (n)	30.3 (676)
SOL, % (n)	81.4 (1814)
Prehospital CPR	36% (802)
ED disposition, % (n)	
Died	24.5 (547)
Operating room	68.4 (1525)
Injury parameters,	
Mechanism of injury, % (n)	
Penetrating	56.3 (n=1254)
GSW	43.7 (n=975)
Stab	9.1 (n=279)
Blunt	43.7 (n=975)
LOMI, % (n)	
Isolated thorax	48.2 (1074)
Isolated abdominal	10.7 (239)
Multiple injuries	41.1 (916)
Injury severity and pattern	
ISS, median (IQR)	27 (9-75)
ISS ≥16, % (n)	66.4 (1481)
Thoracic-AIS, median (IQR)	3 (3-6)
Abdominal-AIS, median (IQR)	3 (3-5)
Head-AIS, median (IQR)	3 (3-5)
Survival rate, % (n)	9.6 (213)

AIS, Abbreviated Injury Scale Score; bpm, beats per minute; CPR, cardiopulmonary resuscitation; ED, emergency department; EMS, emergency medical service; GSW, gunshot wound; ISS, Injury Severity Score; LOMI, location of major injury; SBP, systolic blood pressure; SI, Shock Index; SOL, signs of life.

($p < 0.001$), and were less likely to receive prehospital CPR ($p < 0.001$). However, there was no difference in EMS transport time ($p = 0.28$). Table 2 demonstrates the demographics and injury parameters between the survivors and the non-survivors.

Figure 2 demonstrates the subanalysis based on MOI and age. The highest rate of survival was seen in age groups 30–39 years and 40–49 years. A significant decline in the survival rate was observed in patients >50 years of age undergoing ERT. No patient aged >60 years with a blunt mechanism survived

**Figure 1** Trends of emergency resuscitative thoracotomy (ERT) utilization and survival during the 5-year study period. ED, emergency department.

and there was no survivor above the age of 70 years, regardless of MOI. The survival rate was highest for SWs compared with GSWs (30% vs 10.35, $p < 0.001$). Table 3 demonstrates the subanalysis based on the type of penetrating injury. The survival rate was higher for SWs of those aged 18–49 years. Interestingly, the survival rate was higher for the age group 60–69 years with GSWs compared with SWs (for which the survival rate was 0%).

Table 4 Demonstrates the multivariate regression analysis for survival. After controlling for confounders including body region AIS (chest AIS, abdomen AIS and spine AIS), independent predictors of survival were age <60 (OR 2.7 (1.9–3.8)) years, penetrating MOI (OR 4.7 (2.9–7.6)), prehospital CPR (OR 0.76 (0.67–0.82)), and SOL on ED arrival (OR 1.9 (1.4–2.6)). Other independent predictors were ISS, ED SBP and ED heart rate >60 bpm.

DISCUSSION

ERT is considered one of the most aggressive forms of resuscitation in trauma patients, and its role in trauma is still evolving. To the best of our knowledge, this is the largest nationwide study performed to analyze the role of ERT in the resuscitation of trauma patients. Our study demonstrates significant survival rates of both penetrating mechanism and blunt mechanism. It further suggests that an ERT is futile in patients with age ≥ 70 years, regardless of the MOI as well as in those with age ≥ 60 years with a blunt MOI. In addition, a penetrating MOI is the strongest predictor of survival after an ERT, with penetrating SWs resulting in the greatest survival rate.

Our analysis shows that from 2010 to 2014, the overall ERT rate has declined, and the survival rate has improved. This finding might be due to improvement in the quality of prehospital EMS, along with the development of specific ERT guidelines. In addition, better selection of a suitable patient population through the use of FAST for evaluating cardiac activity might have further decreased the total number of unnecessary ERTs. In our study, the overall survival rate was higher for a penetrating MOI compared with a blunt MOI. A WTA report based on a review of results for the total population had similar results. It reported a survival rate of 11.2% after a penetrating mechanism and 1.6% after a blunt mechanism.⁹ Though the results are similar, the survival rate was higher in both the penetrating and blunt groups in our analysis compared with the WTA report.

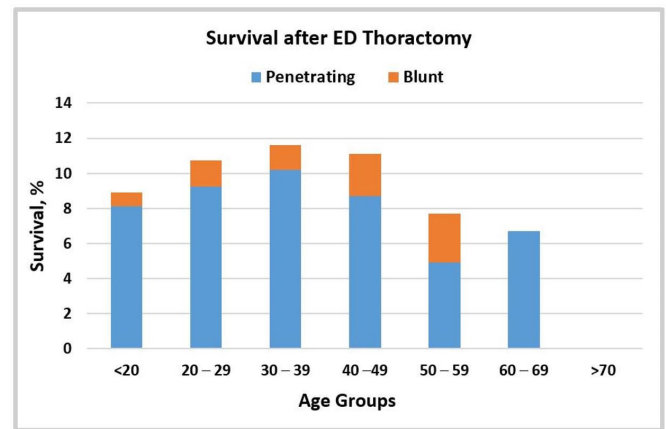
The benefit of ERT depends on the time between the loss of pulses and the procedure. According to WTA, performing ERT is futile in patients with cardiac arrest and ongoing CPR more than

Table 2 Demographics information and injury characteristics of patients who survived or died

Characteristics	Survived (n=213)	Died (n=2016)	P values
Age, years (mean±SD)	33.7±12.8	37.4±17.1	0.002
M	81.7 (174)	81.2 (1637)	0.144
Race, % (n)			
White	40.4 (86)	42.5 (857)	0.169
African-American	34.7 (74)	36.5 (736)	
Others	24.8 (53)	20.9 (423)	
Hispanics	16.4 (35)	13.1 (265)	0.18
Vital parameters			
EMS			
SBP, mm Hg (mean±SD)	71.3±55.9	60.8±59.6	0.015
Heart rate, bpm (mean±SD)	78.5±55.9	73.1±57.1	0.18
Pulse <60 bpm, % (n)	33.3 (71)	38.1 (769)	0.19
ED			
SBP, mm Hg (mean±SD)	83.2±52	72.4±58	0.01
Heart rate, bpm (mean±SD)	101.79±46.8	82.3±54.7	<0.001
Pulse <60 bpm, % (n)	17.3 (37)	31.7 (641)	<0.001
Mechanism of injury, % (n)			
Penetrating	84 (179)	53.3 (1075)	<0.001
GSW	56.4 (101)	81.4 (874)	
Stab	43.6 (78)	18.6 (201)	
Blunt	16 (34)	46.7 (941)	
LOMI, % (n)			
Isolated thorax	37.1 (79)	49.5 (995)	0.003
Isolated abdominal	12.2 (26)	10.5 (213)	
Multiple injuries	50.7 (108)	40.0 (808)	
Injury severity and pattern			
ISS, median (IQR)	25 (10-58)	22 (10-41)	<0.001
ISS ≥16, % (n)	63.9 (135)	66.7 (1346)	0.32
Thoracic-AIS, median (IQR)	4 (3-6)	3 (3-6)	0.63
Abdominal-AIS, median (IQR)	3 (3-5)	3 (3-5)	0.25
Neck-AIS, median (IQR)	3 (3-5)	3 (3-5)	0.15
SOL, % (n)	92.0 (196)	80.3 (1620)	<0.001
Prehospital CPR	25.4 (54)	37.1 (748)	<0.001
ED disposition, % (n)			
Died	1.9 (4)	26.9 (544)	<0.001
Operating room	86.9 (185)	66.5 (1340)	

AIS, Abbreviated Injury Scale Score; bpm, beats per minute; CPR, cardiopulmonary resuscitation; ED, emergency department; EMS, emergency medical service; GSW, gunshot wound; ISS, Injury Severity Score; LOMI, location of major injury; SBP, systolic blood pressure; SI, Shock Index; SOL, signs of life.

10 minutes in blunt injury and 15 minutes in penetrating injury.⁷ In addition, several studies have demonstrated a dismal survival prognosis in patients with cardiac arrest at the scene and undergoing prehospital CPR.^{20,21} In our analysis, only 54 (25.4%) of the patients who survived ERT underwent prehospital CPR. It signifies that patients who lost pulse either in-hospital or shortly before arrival to the ED had the highest survival. Similar results have been reported by other small studies. Moore *et al*⁷ studied 56 patients who survived ERT of which only 19 (33.9%) underwent prehospital CPR. Similarly, Powell *et al*²² analyzed 959 patients who underwent ERT of which 62 survived, more than half of which did not require prehospital CPR.

**Figure 2** Survival after emergency department (ED) thoracotomy based on age and mechanism of injury. Age groups in years.

Our study is also the first to report survival rates based on age groups after ERT. The highest survival rate was seen in ages 20–49 years. An ERT was futile in all patients age ≥70 years, regardless of MOI as well as in patients over the age of 60 years with a blunt trauma. Additionally, for patients with penetrating injuries, the survival rate was highest for those with SWs compared with GSWs for the age group 20–49 years. A review by Rhee *et al*³ analyzed 24 ERT publications during 25 years, and they also reported similar results. The survival rate in their review was 16.8% for SWs and 4.3% for GSWs, much less than what was observed in our study. This difference might be due to the increasing selection of appropriate patients, which would reflect improved survival during the years. Similarly, Tyburski *et al*²³ analyzed a total of 152 patients with a penetrating injury to the heart who underwent ERT. They reported a total survival rate of 8%. This survival rate was attributed to SWs to the heart as none of the patients who had GSWs survived. Interestingly, for the age group 60–69 years, the survival rate was 37% for GSWs and 0% for SWs.

Numerous other studies of ERT have been reported in the literature in the past two decades. Most of them have been reported from a single institution and are limited by the small number of patients undergoing ERT. Our nationwide analysis is the first one to report on ERTs in such a large population. The assessment of physiological parameters at arrival were correlated with survival. The presence of SBP, heart rate more than 60 bpm, a penetrating mechanism, prehospital CPR, and SOL were the independent predictors of survival. Similar results have been reported in the literature.^{3,24} Interestingly, one of the two most

Table 3 Subanalysis based on the type of penetrating injury

Age groups	Survival (n=179)	Gunshot wound, (n=975)	Stab wound, (n=279)	P values
<20, (n=175)	12.4% (21)	8.3% (12)	25.8% (8)	0.006
20–29, (n=502)	13.5% (68)	8.8% (35)	31.1% (33)	<0.001
30–39, (n=254)	15.4% (39)	11.9% (23)	26.2% (16)	0.007
40–49, (n=172)	16.9% (29)	11.4% (14)	30.6% (15)	0.002
50–59, (n=107)	11.2% (12)	8.2% (6)	17.6% (6)	0.15
60–69, (n=29)	34.5% (10)	37.0% (10)	0 (0)	<0.001
≥70, (n=16)	0% (0)	0% (0)	0% (0)	N/A

Age groups in years.
N/A, not applicable.

Table 4 Multivariate regression analysis for survival

Covariates	OR	95% CI	P values
Age <60 years	2.70	1.95 to 3.83	<0.001
ISS	1.1	1.01 to 1.21	0.03
ED SBP (mm Hg)	1.09	1.05 to 1.11	0.01
ED heart rate >60 bpm	1.29	1.14 to 1.31	0.02
Penetrating mechanism of injury	4.76	2.97 to 7.60	<0.001
Prehospital CPR	0.76	0.67 to 0.82	0.002
SOL on ED arrival	1.96	1.46 to 2.63	0.015

bpm, beats per minute; CPR, cardiopulmonary resuscitation; ED, emergency department; ISS, Injury Severity Score; SBP, systolic blood pressure; SOL, signs of life

significant predictors of survival which has previously not been described in the literature is age <60 years. Theoretically, when compared with adults, elderly patients have a decreased physiologic reserve. Thus, an injury that completely overcomes their physiologic reserves is almost certainly not survivable.

An emerging alternative resuscitative measure to ERT that is gaining interest is resuscitative endovascular balloon occlusion of the aorta (REBOA). It is selectively used in patients with exsanguinating hemorrhage below the diaphragm. REBOA is still a novel resuscitative tool, and its use remains controversial. Joseph *et al*²⁵ reviewed 87 autopsy reports of patients who underwent ERT to measure the potential benefit of REBOA in such a patient population. They concluded that REBOA would have been beneficial in only 49% of the patients undergoing ERT, mostly in about 50% of patients with blunt thoracic injuries. Teeter *et al*²⁶ compared REBOA with ERT and concluded that the length of cardiac compressions is longer for patients receiving REBOA before, during, and after aortic occlusion compared with ERT. Although non-significant, a multi-institutional trial has also demonstrated that the time from admission to aortic occlusion is higher for open aortic occlusion compared with REBOA. The time required to perform the thoracotomy may be better spent performing closed cardiac compressions concurrently with REBOA, as that lost time significantly reduces the length of time of cardiac compression, and possibly cerebral and coronary perfusion.²⁷

Another major concern regarding ERT is the safety of the provider. Several studies have demonstrated that trauma victims may be carriers of bloodborne pathogens, which is a major concern for healthcare providers performing ERT.²⁸ Appropriate precautions should be taken before performing this heroic procedure, including double glove, protective eye gear, and integrating the risk of incidents due to fractured ribs in the team briefing.

Several limitations exist in this analysis. TQIP does not capture all trauma patients in USA. Our results may not be generalizable given the retrospective nature of the database. In addition, it lacks data such as cardiac activity or pericardial effusion on FAST, neurological recovery, organ donation information, and precise time to procedure. We do not have data regarding the procedures performed after ERT, however, in regression analysis we controlled for injury severities. Moreover, there is addition of new centers during the later years of TQIP which could skew the results. Finally, we were not able to analyze the exact cause of the decreased utilization in our study. This decrease might be explained by the newly evolving resuscitative procedures such as endovascular occlusion of the aorta, however, the 2010–2014 TQIP data set doesn't provide patients who underwent this procedure. Nevertheless, this is the largest and only nationwide

description of ERT, and reasonable conclusions can be drawn regarding universal survival after ERT in adult populations.

Conclusions

Utilization of ERT has been decreased during the study period along with improved survival rates. Evolving endovascular resuscitative techniques and appropriate patient selection may have a role in the observed results. Additionally, the results of our study demonstrate that performing ERT on patients aged >60 years with a blunt MOI or on any patient aged ≥70 years, regardless of MOI, is futile and should be avoided. More studies are required to further define the appropriate patient population that can benefit from this invasive procedure.

Contributors BJ, MK, FJ, RL and PR designed this study, searched the literature and collected the data. BJ, MK, FJ and PR analyzed the data. All authors participated in data interpretation, manuscript preparation and approval.

Funding The authors have not declared a specific grant for this research from any funding agency in the public, commercial or not-for-profit sectors.

Competing interests None declared.

Patient consent Not required.

Provenance and peer review Not commissioned; externally peer reviewed.

Open access This is an open access article distributed in accordance with the Creative Commons Attribution Non Commercial (CC BY-NC 4.0) license, which permits others to distribute, remix, adapt, build upon this work non-commercially, and license their derivative works on different terms, provided the original work is properly cited, appropriate credit is given, any changes made indicated, and the use is non-commercial. See: <http://creativecommons.org/licenses/by-nc/4.0/>

REFERENCES

1. Prevention CfDca. *FastStats - leading causes of death*: Centers for Disease Control and Prevention, 2017.
2. Rhee P, Joseph B, Pandit V, Aziz H, Verduyck G, Kulvatunoy N, Friese RS. Increasing trauma deaths in the United States. *Ann Surg* 2014;260:13–21.
3. Rhee PM, Acosta J, Bridgeman A, Wang D, Jordan M, Rich N. Survival after emergency department thoracotomy: review of published data from the past 25 years. *J Am Coll Surg* 2000;190:288–98.
4. Hopson LR, Hirsh E, Delgado J, Domeier RM, Krohmer J, McSwain NE, Weldon C, Friel M, Hoyt DB. National Association of EMS Physicians Standards and Clinical Practice Committee. Guidelines for withholding or termination of resuscitation in prehospital traumatic cardiopulmonary arrest. *J Am Coll Surg* 2003;196:475–81.
5. Beall AC, Diethrich EB, Crawford HW, Cooley DA, De Bakey ME. Surgical management of penetrating cardiac injuries. *Am J Surg* 1966;112:686–92.
6. Seamon MJ, Haut ER, Van Arendonk K, Barbosa RR, Chiu WC, Dente CJ, Fox N, Jawa RS, Khwaja K, Lee JK, *et al*. An evidence-based approach to patient selection for emergency department thoracotomy: a practice management guideline from the Eastern Association for the Surgery of Trauma. *J Trauma Acute Care Surg* 2015;79:159–73.
7. Moore EE, Knudson MM, Burlew CC, Inaba K, Dicker RA, Biffi WL, Malhotra AK, Schreiber MA, Browder TD, Coimbra R, *et al*. Defining the limits of resuscitative emergency department thoracotomy: a contemporary Western Trauma Association perspective. *J Trauma* 2011;70:334–9.
8. Cothren CC, Moore EE. Emergency department thoracotomy for the critically injured patient: Objectives, indications, and outcomes. *World J Emerg Surg* 2006;1:4.
9. Working Group, Ad Hoc Subcommittee on Outcomes, American College of Surgeons. Committee on Trauma. Practice management guidelines for emergency department thoracotomy. Working Group, Ad Hoc Subcommittee on Outcomes, American College of Surgeons-Committee on Trauma. *J Am Coll Surg* 2001;193:303.
10. Velmahos GC, Degiannis E, Souter I, Allwood AC, Saadia R. Outcome of a strict policy on emergency department thoracotomies. *Arch Surg* 1995;130:774–7.
11. Morrison JJ, Poon H, Rasmussen TE, Khan MA, Midwinter MJ, Blackburne LH, Garner JP. Resuscitative thoracotomy following wartime injury. *J Trauma Acute Care Surg* 2013;74:825–9.
12. Capote A, Michael A, Almodovar J, Chan P, Skinner R, Martin M. Emergency department thoracotomy: too little, too much, or too late. *Am Surg* 2013;79:982–6.
13. Easter JS, Vinton DT, Haukoos JS. Emergent pediatric thoracotomy following traumatic arrest. *Resuscitation* 2012;83:1521–4.
14. Lustenberger T, Labler L, Stover JF, Keel MJ. Resuscitative emergency thoracotomy in a Swiss trauma centre. *Br J Surg* 2012;99:541–8.
15. Johannesdottir BK, Mogensen B, Gudbjartsson T. Emergency thoracotomy as a rescue treatment for trauma patients in Iceland. *Injury* 2013;44:1186–90.



16. Edens JW, Beekley AC, Chung KK, Cox ED, Eastridge BJ, Holcomb JB, Blackburn LH. Longterm outcomes after combat casualty emergency department thoracotomy. *J Am Coll Surg* 2009;209:188–97.
17. Schnüriger B, Inaba K, Branco BC, Salim A, Russell K, Lam L, Plurad D, Demetriades D. Organ donation: an important outcome after resuscitative thoracotomy. *J Am Coll Surg* 2010;211:450–5.
18. Gomez G, Fecher A, Joy T, Pardo I, Jacobson L, Kemp H. Optimizing outcomes in emergency room thoracotomy: a 20-year experience in an urban Level I trauma center. *Am Surg* 2010;76:406–10.
19. Inaba K, Chouliaras K, Zakaluzny S, Swadron S, Mailhot T, Seif D, Teixeira P, Sivrikov E, Ives C, Barmparas G, et al. FAST ultrasound examination as a predictor of outcomes after resuscitative thoracotomy: a prospective evaluation. *Ann Surg* 2015;262:512–8.
20. Martin SK, Shatney CH, Sherck JP, Ho CC, Homan SJ, Neff J, Moore EE. Blunt trauma patients with prehospital pulseless electrical activity (PEA): poor ending assured. *J Trauma* 2002;53:876–81.
21. Rabinovici R, Bugaev N. Resuscitative thoracotomy: an update. *Scand J Surg* 2014;103:112–9.
22. Powell DW, Moore EE, Cothren CC, Ciesla DJ, Burch JM, Moore JB, Johnson JL. Is emergency department resuscitative thoracotomy futile care for the critically injured patient requiring prehospital cardiopulmonary resuscitation? *J Am Coll Surg* 2004;199:211–5.
23. Tyburski JG, Astra L, Wilson RF, Dente C, Steffes C. Factors affecting prognosis with penetrating wounds of the heart. *J Trauma* 2000;48:587–91.
24. Asensio JA, Murray J, Demetriades D, Berne J, Cornwell E, Velmahos G, Gomez H, Berne TV. Penetrating cardiac injuries: a prospective study of variables predicting outcomes. *J Am Coll Surg* 1998;186:24–34.
25. Joseph B, Ibraheem K, Haider AA, Kulvatunyou N, Tang A, O’Keeffe T, Bauman ZM, Green DJ, Latifi R, Rhee P. Identifying potential utility of resuscitative endovascular balloon occlusion of the aorta: An autopsy study. *J Trauma Acute Care Surg* 2016;81(Suppl 2):S128–S132.
26. Teeter W, Romagnoli A, Hoehn M, Menaker J, Hu P, Stein D, Scalea T, Brenner M. 303 Resuscitative endovascular balloon occlusion of the aorta improves quality of resuscitation versus thoracotomy in patients in traumatic arrest. *Ann Emerg Med* 2016;68:S117.
27. DuBose JJ, Scalea TM, Brenner M, Skiada D, Inaba K, Cannon J, Moore L, Holcomb J, Turay D, Arbabi CN, et al. The AAST prospective Aortic Occlusion for Resuscitation in Trauma and Acute Care Surgery (AORTA) registry: data on contemporary utilization and outcomes of aortic occlusion and resuscitative balloon occlusion of the aorta (REBOA). *J Trauma Acute Care Surg* 2016;81:409–19.
28. Sloan EP, McGill BA, Zalenski R, Tsui P, Chen EH, Duda J, Morris M, Sherer R, Barrett J. Human immunodeficiency virus and hepatitis B virus seroprevalence in an urban trauma population. *J Trauma* 1995;38:736–41.